

MONTHLY MEMBERSHIP PROGRESS REPORT

LOCATION INDIA

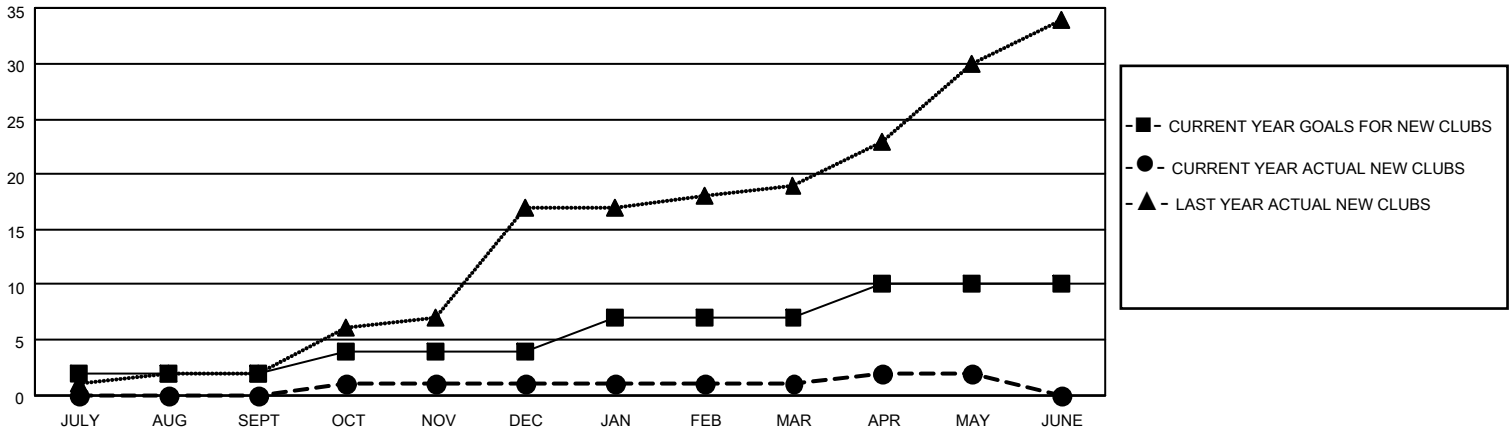
District 317 C

Results as of: 5/31/2022

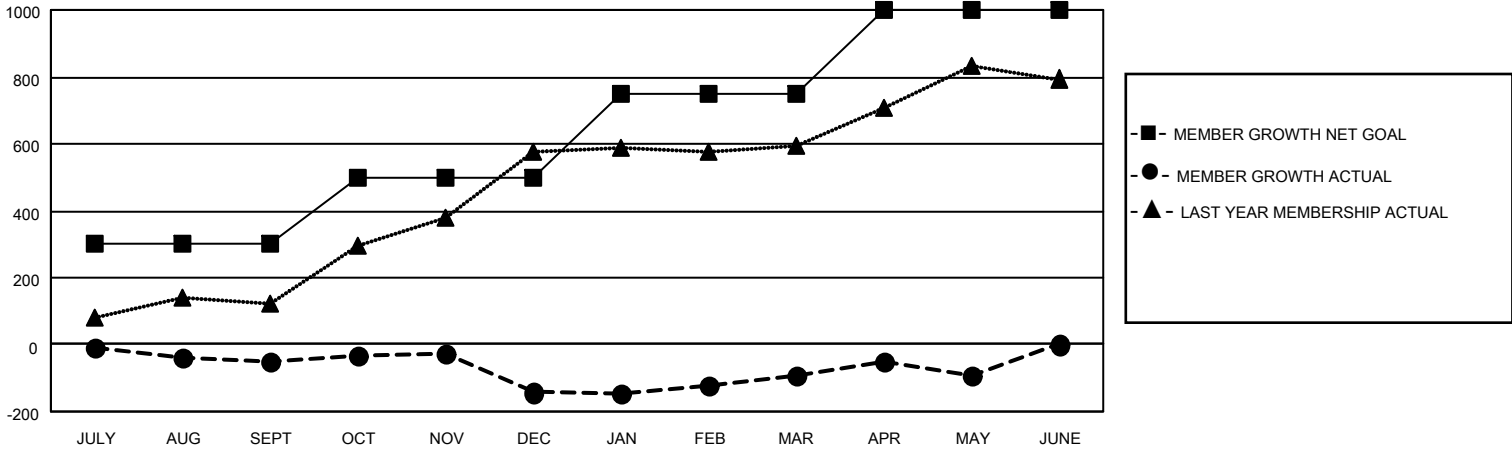
Clubs			
RESULTS FOR 2021-2022			
QUARTER	NEW CLUB GOAL	NEW CLUBS	DROPPED CLUBS
JULY/AUG/SEPT	2	0	2
OCT/NOV/DEC	2	1	3
JAN/FEB/MAR	3	0	1
APR/MAY/JUNE	3	1	0

Members			
RESULTS FOR 2021-2022			
QUARTER	MEMBER GROWTH NET GOAL	MEMBER GROWTH ACTUAL	DROPPED MEMBERS ACTUAL (including transfers)
JULY/AUG/SEPT	300	71	111
OCT/NOV/DEC	200	93	183
JAN/FEB/MAR	250	82	31
APR/MAY/JUNE	250	69	66

GOALS AND ACTUAL NEW CLUBS CUMULATIVE



GOALS AND ACTUAL MEMBERS CUMULATIVE



DROPPED CLUBS: 6	
<u>DROPPED MEMBERS</u>	
DECEASED	12
CLUB CANCELLED	79
OTHER	300
TOTAL	391

62 CLUBS OF 131 ADDED 1 OR MORE NEW MEMBERS

[CLICK HERE FOR CUMULATIVE MEMBERSHIP DATA](#)

<u>GENDER DISTRIBUTION</u>	
MALE	2,627 (77.84%)
FEMALE	748 (22.16%)
NON BINARY	0 (0.00%)
PREFER NOT TO ANSWER	0 (0.00%)
TOTAL FAMILY UNIT MEMBERS	1,363
FAMILY MEMBERS PAYING HALF DUES	758